



NIKE SWIM
PERFORMANCE 2018

**BRING
YOUR
BEST**

PRINTS	PG.2
CORE	PG.15
WATER POLO	PG.27
GUARD	PG.30
SPORT	PG.33
TEAM APPAREL	PG.36
SWIM GEAR	PG.42
FIT GUIDES	PG.56

NEW NESS8121

WOMEN'S NIKE SWIM
GEO AFTERSCHOCK
PERFORMANCE CUT OUT
ONE PIECE

001 black

- ▶ 92% polyester / 8% spandex (chlorine resistant)
- ▶ 100% polyester lining
- ▶ poly blend
- ▶ embroidered swoosh
- ▶ skinny v-back for optimal range of motion
- ▶ open back coverage
- ▶ flat seams for reduced chafing
- ▶ ergonomic enhanced fit
- ▶ internal lining



001



SIZES 24–38

NEW NESS8122

MEN'S NIKE SWIM
GEO AFTERSCHOCK
PERFORMANCE JAMMER

001 black

- ▶ 92% polyester / 8% spandex (chlorine resistant)
- ▶ 100% polyester lining
- ▶ poly blend
- ▶ embroidered swoosh
- ▶ interior Nike drawcord for adjustability
- ▶ front gusset for fit and comfort
- ▶ flat seams for reduced chafing
- ▶ ergonomic enhanced fit
- ▶ internal lining



001



Notice: Information in this book has not been legally approved for marketing or merchandising usage.
Do not use any product images, product names, descriptions, or benefits for consumer facing applications.
Please contact the Nike Swim Marketing Department for approved content.

SIZES 28–38

NEW NESS8120

WOMEN'S NIKE SWIM
GEO AFTERSHOCK
PERFORMANCE
RACERBACK TOP

001 black

- ▶ 92% polyester / 8% spandex (chlorine resistant)
- ▶ 100% polyester lining
- ▶ poly blend
- ▶ embroidered swoosh
- ▶ racerback thin straps for optimal range of motion
- ▶ "stay-put" removable soft cups
- ▶ ergonomic enhanced fit
- ▶ internal lining



001

SIZES XS–XL

NEW NESS8123

WOMEN'S NIKE SWIM
GEO AFTERSHOCK
PERFORMANCE
SPORT BIKINI BOTTOM

001 black

- ▶ 92% polyester / 8% spandex (chlorine resistant)
- ▶ 100% polyester lining
- ▶ poly blend
- ▶ embroidered swoosh
- ▶ interior Nike drawcord for adjustability
- ▶ 2" outseam
- ▶ ergonomic enhanced fit
- ▶ internal lining



001

Notice: Information in this book has not been legally approved for marketing or merchandising usage.
Do not use any product images, product names, descriptions, or benefits for consumer facing applications.
Please contact the Nike Swim Marketing Department for approved content.

SIZES XS–XL

NEW NESS8050

WOMEN'S NIKE SWIM
FADE STING PERFORMANCE
FASTBACK ONE PIECE

- 001 black
- 313 court green
- 494 game royal
- 536 court purple
- 614 university red
- 705 varsity maize
- 845 team orange

- 92% polyester / 8% spandex (chlorine resistant)
- 100% polyester lining
- poly blend
- embroidered swoosh
- wide v-back for maximum support and optimal range of motion
- full back coverage
- flat seams for reduced chafing
- ergonomic enhanced fit
- internal lining



001



313



494



536



614



705



845

SIZES 20–40

NEW NESS8051

WOMEN'S NIKE SWIM
FADE STING PERFORMANCE
CUT OUT ONE PIECE

- 001 black
- 313 court green
- 494 game royal
- 536 court purple
- 614 university red
- 705 varsity maize
- 845 team orange

- 92% polyester / 8% spandex (chlorine resistant)
- 100% polyester lining
- poly blend
- embroidered swoosh
- skinny v-back straps for optimal range of motion
- open back coverage
- flat seams for reduced chafing
- ergonomic enhanced fit
- internal lining



001



313



494



536



614



705



845

Notice: Information in this book has not been legally approved for marketing or merchandising usage.
Do not use any product images, product names, descriptions, or benefits for consumer facing applications.
Please contact the Nike Swim Marketing Department for approved content.

SIZES 24–38

NEW NESS8052

MEN'S NIKE SWIM
FADE STING PERFORMANCE
JAMMER

- 001 black
- 313 court green
- 494 game royal
- 536 court purple
- 614 university red
- 705 varsity maize
- 845 team orange

- ▶ 92% polyester / 8% spandex (chlorine resistant)
- ▶ 100% polyester lining
- ▶ poly blend
- ▶ embroidered swoosh
- ▶ interior Nike drawcord for adjustability
- ▶ inseam gusset for fit and comfort
- ▶ flat seams for reduced chafing
- ▶ ergonomic enhanced fit
- ▶ internal lining



001



313

494

536



614

705

845

SIZES 20–38

NEW NESS8053

MEN'S NIKE SWIM
FADE STING PERFORMANCE
BRIEF

- 001 black
- 313 court green
- 494 game royal
- 536 court purple
- 614 university red
- 705 varsity maize
- 845 team orange

- ▶ 92% polyester / 8% spandex (chlorine resistant)
- ▶ 100% polyester lining
- ▶ poly blend
- ▶ embroidered swoosh
- ▶ interior Nike drawcord for adjustability
- ▶ inseam gusset for fit and comfort
- ▶ flat seams for reduced chafing
- ▶ ergonomic enhanced fit
- ▶ internal lining



001



313

494

536



614

705

845

Notice: Information in this book has not been legally approved for marketing or merchandising usage.
Do not use any product images, product names, descriptions, or benefits for consumer facing applications.
Please contact the Nike Swim Marketing Department for approved content.

SIZES 22–38

NEW NESS8010

WOMEN'S NIKE SWIM
NOVA SPARK PERFORMANCE
FASTBACK ONE PIECE

001 black
313 court green
494 game royal
536 court purple
614 university red

- ▶ Nike Performance Poly (chlorine resistant)
- ▶ 53% polyester / 47% PBT
- ▶ 100% polyester lining
- ▶ embroidered swoosh
- ▶ wide v-back for maximum support and optimal range of motion
- ▶ full back coverage
- ▶ flat seams for reduced chafing
- ▶ ergonomic enhanced fit
- ▶ internal lining



001



313



494



536



614

SIZES 20–40

NEW NESS8011

WOMEN'S NIKE SWIM
NOVA SPARK PERFORMANCE
ONE PIECE

001 black
313 court green
494 game royal
536 court purple
614 university red

- ▶ Nike Performance Poly (chlorine resistant)
- ▶ 53% polyester / 47% PBT
- ▶ 100% polyester lining
- ▶ skinny v-back straps for optimal range of motion
- ▶ open back coverage
- ▶ flat seams for reduced chafing
- ▶ ergonomic enhanced fit
- ▶ internal lining



001



313



494



536



614

SIZES 24–38

Notice: Information in this book has not been legally approved for marketing or merchandising usage.
Do not use any product images, product names, descriptions, or benefits for consumer facing applications.
Please contact the Nike Swim Marketing Department for approved content.

NEW NESS8012

MEN'S NIKE SWIM
NOVA SPARK PERFORMANCE
JAMMER

001 black
313 court green
494 game royal
536 court purple
614 university red

- ▶ Nike Performance Poly (chlorine resistant)
- ▶ 53% polyester / 47% PBT
- ▶ 100% polyester lining
- ▶ embroidered swoosh
- ▶ interior Nike drawcord for adjustability
- ▶ front gusset for fit and comfort
- ▶ flat seams for reduced chafing
- ▶ ergonomic enhanced fit
- ▶ internal lining



001



313



494



536



614

SIZES 20–38

NEW NESS8013

MEN'S NIKE SWIM
NOVA SPARK PERFORMANCE
BRIEF

001 black
313 court green
494 game royal
536 court purple
614 university red

- ▶ Nike Performance Poly (chlorine resistant)
- ▶ 53% polyester / 47% PBT
- ▶ 100% polyester lining
- ▶ embroidered swoosh
- ▶ interior Nike drawcord for adjustability
- ▶ inseam gusset for fit and comfort
- ▶ ergonomic enhanced fit
- ▶ internal lining



001



313



494



536



614

SIZES 22–38

Notice: Information in this book has not been legally approved for marketing or merchandising usage.
Do not use any product images, product names, descriptions, or benefits for consumer facing applications.
Please contact the Nike Swim Marketing Department for approved content.

NEW NESS8041

WOMEN'S NIKE SWIM
TIDAL RIOT PERFORMANCE
FASTBACK ONE PIECE

001 black
494 game royal
536 court purple
614 university red

- ▶ 92% polyester / 8% spandex (chlorine resistant)
- ▶ 100% polyester lining
- ▶ poly blend
- ▶ embroidered swoosh
- ▶ wide v-back for maximum support and optimal range of motion
- ▶ full back coverage
- ▶ flat seams for reduced chafing
- ▶ ergonomic enhanced fit
- ▶ internal lining



001



494



536



614

SIZES 20–40

NEW NESS8042

WOMEN'S NIKE SWIM
TIDAL RIOT PERFORMANCE
MODERN CUT ONE PIECE

001 black
494 game royal
536 court purple
614 university red

- ▶ 92% polyester / 8% spandex (chlorine resistant)
- ▶ 100% polyester lining
- ▶ poly blend
- ▶ embroidered swoosh
- ▶ skinny open v-back straps for optimal range of motion
- ▶ open back coverage
- ▶ flat seams for reduced chafing
- ▶ ergonomic enhanced fit
- ▶ internal lining



001



494



536



614

SIZES 24–38

Notice: Information in this book has not been legally approved for marketing or merchandising usage.
Do not use any product images, product names, descriptions, or benefits for consumer facing applications.
Please contact the Nike Swim Marketing Department for approved content.

NEW NESS8044

MEN'S NIKE SWIM
TIDAL RIOT PERFORMANCE
JAMMER

001 black
494 game royal
536 court purple
614 university red

- ▶ 92% polyester / 8% spandex (chlorine resistant)
- ▶ 100% polyester lining
- ▶ poly blend
- ▶ embroidered swoosh
- ▶ interior Nike drawcord for adjustability
- ▶ front gusset for fit and comfort
- ▶ flat seams for reduced chafing
- ▶ ergonomic enhanced fit
- ▶ internal lining



001



494

536

614

SIZES 22–38

NEW NESS8043

MEN'S NIKE SWIM
TIDAL RIOT PERFORMANCE
BRIEF

001 black
494 game royal
536 court purple
614 university red

- ▶ 92% polyester / 8% spandex (chlorine resistant)
- ▶ 100% polyester lining
- ▶ poly blend
- ▶ embroidered swoosh
- ▶ interior Nike drawcord for adjustability
- ▶ flat seams for reduced chafing
- ▶ ergonomic enhanced fit
- ▶ internal lining



001



494

536



614

SIZES 22–38

Notice: Information in this book has not been legally approved for marketing or merchandising usage.
Do not use any product images, product names, descriptions, or benefits for consumer facing applications.
Please contact the Nike Swim Marketing Department for approved content.

NEW NESS8016

WOMEN'S NIKE SWIM
DRIFT GRAFFITI
PERFORMANCE MODERN
CUT OUT ONE PIECE

340 menta
580 fuchsia blast
639 hot punch

- ▶ 82% polyester / 18% spandex (chlorine resistant)
- ▶ 100% polyester lining
- ▶ poly blend
- ▶ embroidered swoosh
- ▶ skinny open v-back straps for optimal range of motion
- ▶ open back coverage
- ▶ flat seams for reduced chafing
- ▶ ergonomic enhanced fit
- ▶ internal colored lining



340



580



639

SIZES 24–38

NEW NESS8017

MEN'S NIKE SWIM
DRIFT GRAFFITI
PERFORMANCE JAMMER

340 menta
580 fuchsia blast
639 hot punch

- ▶ 82% polyester / 18% spandex (chlorine resistant)
- ▶ 100% polyester lining
- ▶ poly blend
- ▶ embroidered swoosh
- ▶ interior Nike drawcord for adjustability
- ▶ front gusset for fit and comfort
- ▶ flat seams for reduced chafing
- ▶ ergonomic enhanced fit
- ▶ internal colored lining



340



580



639

SIZES 22–38

Notice: Information in this book has not been legally approved for marketing or merchandising usage.
Do not use any product images, product names, descriptions, or benefits for consumer facing applications.
Please contact the Nike Swim Marketing Department for approved content.

NEW NESS8082

WOMEN'S NIKE SWIM
DRIFT GRAFFITI
PERFORMANCE CROSSBACK
SPORT TOP

340 menta
580 fuchsia blast
639 hot punch

- ▶ 82% polyester / 18% spandex (chlorine resistant)
- ▶ 100% polyester lining
- ▶ poly blend
- ▶ embroidered swoosh
- ▶ adjustable thin crossback straps for a custom fit
- ▶ "stay-put" removable soft cups
- ▶ ergonomic enhanced fit
- ▶ internal colored lining



340



580



639

SIZES XS-XL

NEW NESS8088

WOMEN'S NIKE SWIM
DRIFT GRAFFITI
PERFORMANCE SPORT
BIKINI BOTTOM

340 menta
580 fuchsia blast
639 hot punch

- ▶ 82% polyester / 18% spandex (chlorine resistant)
- ▶ 100% polyester lining
- ▶ poly blend
- ▶ embroidered swoosh
- ▶ interior Nike drawcord for adjustability
- ▶ 2" outseam
- ▶ ergonomic enhanced fit
- ▶ internal colored lining



340



580



639

Notice: Information in this book has not been legally approved for marketing or merchandising usage.
Do not use any product images, product names, descriptions, or benefits for consumer facing applications.
Please contact the Nike Swim Marketing Department for approved content.

SIZES XS-XL

NEW NESS8006

WOMEN'S NIKE SWIM
TIDAL RIOT PERFORMANCE
MODERN CUT OUT ONE PIECE

340 menta
430 lt blue fury
580 fuchsia blast

- Nike Performance Poly (chlorine resistant)
- 100% polyester
- 100% polyester lining
- embroidered swoosh
- skinny open v-back straps for optimal range of motion
- open back coverage
- flat seams for reduced chafing
- ergonomic enhanced fit
- internal colored lining



340



340

430

SIZES 24–38

NEW NESS8008

MEN'S NIKE SWIM
TIDAL RIOT PERFORMANCE
JAMMER

340 menta
430 lt blue fury
580 fuchsia blast

- Nike Performance Poly (chlorine resistant)
- 100% polyester
- 100% polyester lining
- embroidered swoosh
- interior Nike drawcord for adjustability
- front gusset for fit and comfort
- flat seams for reduced chafing
- ergonomic enhanced fit
- internal colored lining



340



494

536

SIZES 24–38

Notice: Information in this book has not been legally approved for marketing or merchandising usage.
Do not use any product images, product names, descriptions, or benefits for consumer facing applications.
Please contact the Nike Swim Marketing Department for approved content.

NEW NESS8001

WOMEN'S NIKE SWIM
RUSH HEATHER PERFORMANCE
CUT OUT ONE PIECE

340 menta
422 thunder blue
580 fuchsia blast

- ▶ 87% polyester / 13% spandex (chlorine resistant)
- ▶ 100% polyester lining
- ▶ poly blend
- ▶ embroidered swoosh
- ▶ skinny open v-back straps for optimal range of motion
- ▶ open back coverage
- ▶ flat seams for reduced chafing
- ▶ ergonomic enhanced fit
- ▶ internal colored lining



340



422



580

SIZES 24–38

NEW NESS8002

MEN'S NIKE SWIM
RUSH HEATHER PERFORMANCE
BRIEF

340 menta
422 thunder blue
580 fuchsia blast

- ▶ 87% polyester / 13% spandex (chlorine resistant)
- ▶ 100% polyester lining
- ▶ poly blend
- ▶ embroidered swoosh
- ▶ interior Nike drawcord for adjustability
- ▶ flat seams for reduced chafing
- ▶ ergonomic enhanced fit
- ▶ internal lining



340



422



580

SIZES 24–38

Notice: Information in this book has not been legally approved for marketing or merchandising usage.
Do not use any product images, product names, descriptions, or benefits for consumer facing applications.
Please contact the Nike Swim Marketing Department for approved content.

NEW NESS8083

WOMEN'S NIKE SWIM
RUSH HEATHER PERFORMANCE
KEYHOLE SPORT TOP

340 menta
422 thunder blue
580 fuchsia blast

- ▶ 87% polyester / 13% spandex (chlorine resistant)
- ▶ 100% polyester lining
- ▶ embroidered swoosh
- ▶ thin v-back straps for optimal range of motion
- ▶ keyhole for water drainage
- ▶ "stay-put" removable soft cups
- ▶ ergonomic enhanced fit
- ▶ internal colored lining



340



422



580

SIZES XS-XL

NEW NESS8089

WOMEN'S NIKE SWIM
RUSH HEATHER PERFORMANCE
SPORT BIKINI BOTTOM

340 menta
422 thunder blue
580 fuchsia blast

- ▶ 87% polyester / 13% spandex (chlorine resistant)
- ▶ 100% polyester lining
- ▶ embroidered swoosh
- ▶ interior Nike drawcord for adjustability
- ▶ 2" outseam
- ▶ ergonomic enhanced fit
- ▶ internal colored lining



340



422



580

Notice: Information in this book has not been legally approved for marketing or merchandising usage.
Do not use any product images, product names, descriptions, or benefits for consumer facing applications.
Please contact the Nike Swim Marketing Department for approved content.

SIZES XS-XL

NEW NESS8071

WOMEN'S NIKE SWIM
PERFORMANCE ADJUSTABLE
CROSSBACK ONE PIECE

001 black
340 menta
430 lt blue fury
580 fuchsia blast
639 hot punch

- ▶ 82% polyester / 18% spandex (chlorine resistant)
- ▶ 100% polyester lining
- ▶ poly blend

- ▶ embroidered swoosh
- ▶ adjustable thin straps for a custom fit
- ▶ open back coverage
- ▶ flat seams for reduced chafing
- ▶ ergonomic enhanced fit
- ▶ internal lining



001



340



430



580



639

SIZES 24–38

NEW NESS8081

WOMEN'S NIKE SWIM
PERFORMANCE ADJUSTABLE
T-BACK TOP

001 black
340 menta
430 lt blue fury
580 fuchsia blast
639 hot punch

- ▶ 82% polyester / 18% spandex (chlorine resistant)
- ▶ 100% polyester lining
- ▶ poly blend

- ▶ embroidered swoosh
- ▶ adjustable thin T- back straps for a custom fit
- ▶ “stay-put” removable soft cups
- ▶ ergonomic enhanced fit
- ▶ internal lining



001



340



430



580



639

SIZES XS-XL

Notice: Information in this book has not been legally approved for marketing or merchandising usage.
Do not use any product images, product names, descriptions, or benefits for consumer facing applications.
Please contact the Nike Swim Marketing Department for approved content.

NEW NESS8080

WOMEN'S NIKE SWIM PERFORMANCE RACERBACK TOP

- 001 black
- 340 menta
- 430 lt blue fury
- 580 fuchsia blast
- 614 university red
- 639 hot punch

- ▶ 82% polyester / 18% spandex (chlorine resistant)
- ▶ 100% polyester lining
- ▶ poly blend
- ▶ embroidered swoosh
- ▶ thin racerback straps for optimal range of motion
- ▶ "stay-put" removable soft cups
- ▶ flat seams for reduced chafing
- ▶ ergonomic enhanced fit
- ▶ internal colored lining



001



340

430



580

614



639

SIZES XS-XL

NEW NESS8086

WOMEN'S NIKE SWIM PERFORMANCE SPORT BIKINI BOTTOM

- 001 black
- 340 menta
- 430 lt blue fury
- 580 fuchsia blast
- 639 hot punch

- ▶ 82% polyester / 18% spandex (chlorine resistant)
- ▶ 100% polyester lining
- ▶ poly blend
- ▶ embroidered swoosh
- ▶ interior Nike drawcord for adjustability
- ▶ flat seams for reduced chafing
- ▶ ergonomic enhanced fit
- ▶ 2" outseam
- ▶ internal colored lining



001



340



430



580



639

SIZES XS-XL

Notice: Information in this book has not been legally approved for marketing or merchandising usage.
Do not use any product images, product names, descriptions, or benefits for consumer facing applications.
Please contact the Nike Swim Marketing Department for approved content.

NEW NESS8337

WOMEN'S NIKE SWIM
LONG SLEEVE HYDROGUARD

001 black
100 white
422 thunder blue
430 lt blue fury
580 fuchsia blast

- ▶ 91% polyester / 9% spandex
- ▶ Dri-FIT
- ▶ UV protection (UPF 40+)
- ▶ shaped funnel neck provides comfort and coverage
- ▶ flat-seams for reduced chafing and ergonomic construction for motion-ready fit
- ▶ internal Nike Swim necktape provides additional comfort



001



100



422



430



580

SIZES XS-XL

NEW NESS8262

WOMEN'S NIKE SWIM
KICK SHORT

001 black
422 thunder blue
430 lt blue fury

- ▶ 83% polyester / 17% spandex
- ▶ 100% polyester lining
- ▶ wide waistband for comfort and support
- ▶ ergonomic enhanced fit
- ▶ 2" inseam / 9" outseam
- ▶ internal colored lining



001



422



430

SIZES XS-XL

Notice: Information in this book has not been legally approved for marketing or merchandising usage.
Do not use any product images, product names, descriptions, or benefits for consumer facing applications.
Please contact the Nike Swim Marketing Department for approved content.

NESS7050

WOMEN'S NIKE SWIM
PERFORMANCE CUT OUT
ONE PIECE

- 001 black
- 313 court green
- 494 game royal
- 536 court purple
- 614 university red
- 647 university red/navy
- 705 varsity maize
- 845 team orange

- ▶ 100% polyester
- 53% polyester / 47% PBT (chlorine resistant)
- ▶ 100% polyester lining
- ▶ Nike Performance Poly
- ▶ skinny v-back for optimal range of motion
- ▶ open back coverage
- ▶ ergonomic enhanced fit
- ▶ internal lining



001



313



494



536



614



647



705



845

SIZES 24–38

NESS7051

WOMEN'S NIKE SWIM
PERFORMANCE FASTBACK
ONE PIECE

- 001 black
- 313 court green
- 494 game royal
- 536 court purple
- 614 university red
- 647 university red/navy
- 705 varsity maize
- 845 team orange

- ▶ 100% polyester
- 53% polyester / 47% PBT (chlorine resistant)
- ▶ 100% polyester lining
- ▶ Nike Performance Poly
- ▶ wide v-back for maximum support and optimal range of motion
- ▶ full back coverage
- ▶ flat seams for reduced chafing
- ▶ ergonomic enhanced fit
- ▶ internal lining



001



313



494



536



614



647



705



845

SIZES 20–42

Notice: Information in this book has not been legally approved for marketing or merchandising usage.
Do not use any product images, product names, descriptions, or benefits for consumer facing applications.
Please contact the Nike Swim Marketing Department for approved content.

NESS7053

MEN'S NIKE SWIM PERFORMANCE JAMMER

- 001** black
- 313** court green
- 494** game royal
- 536** court purple
- 614** university red
- 647** university red/navy
- 705** varsity maize
- 845** team orange

- ▶ 100% polyester
- 53% polyester / 47% PBT (chlorine resistant)
- ▶ 100% polyester lining
- ▶ Nike Performance Poly
- ▶ embroidered swoosh
- ▶ interior Nike drawcord for adjustability
- ▶ front gusset for fit and comfort
- ▶ flat seams for reduced chafing
- ▶ ergonomic enhanced fit
- ▶ internal lining



001



313



494



536



614



647



705



845

SIZES 20–38

NESS7054

MEN'S NIKE SWIM PERFORMANCE BRIEF

- 001** black
- 313** court green
- 494** game royal
- 536** court purple
- 614** university red
- 647** university red/navy
- 705** varsity maize
- 845** team orange

- ▶ 100% polyester
- 53% polyester / 47% PBT (chlorine resistant)
- ▶ 100% polyester lining
- ▶ Nike Performance Poly
- ▶ embroidered swoosh
- ▶ interior Nike drawcord for adjustability
- ▶ flat seams for reduced chafing
- ▶ ergonomic enhanced fit
- ▶ internal lining



001



313



494



536



614



647



705



845

SIZES 22–38

Notice: Information in this book has not been legally approved for marketing or merchandising usage.
Do not use any product images, product names, descriptions, or benefits for consumer facing applications.
Please contact the Nike Swim Marketing Department for approved content.

NESS7055

MEN'S NIKE SWIM
PERFORMANCE SQUARE LEG

001 black
494 game royal
647 university red/navy

- ▶ 100% polyester
- ▶ 53% polyester / 47% PBT (chlorine resistant)
- ▶ 100% polyester lining
- ▶ Nike Performance Poly
- ▶ embroidered swoosh
- ▶ interior Nike drawcord for adjustability
- ▶ flat seams for reduced chafing
- ▶ ergonomic enhanced fit
- ▶ internal lining



001



494

647

SIZES 22–38

TFSS0081

MEN'S NIKE SWIM
PERFORMANCE CUT OUT
ONE PIECE

001 black
313 court green
440 midnight navy
494 game royal
536 court purple
614 university red

- ▶ Nike Performance Poly (chlorine resistant)
- ▶ 100% polyester
- ▶ 100% polyester lining
- ▶ embroidered swoosh
- ▶ skinny v-back for optimal range of motion
- ▶ open back coverage
- ▶ flat seams for reduced chafing
- ▶ ergonomic enhanced fit
- ▶ internal lining



001



313

440

494



536

614

Notice: Information in this book has not been legally approved for marketing or merchandising usage.
Do not use any product images, product names, descriptions, or benefits for consumer facing applications.
Please contact the Nike Swim Marketing Department for approved content.

SIZES 24–38

TFSS0082

WOMEN'S NIKE SWIM
PERFORMANCE RACERBACK
ONE PIECE

001 black
313 court green
440 midnight navy
494 game royal
536 court purple
614 university red

- ▶ 100% polyester
- 53% polyester / 47% PBT (chlorine resistant)
- ▶ 100% polyester lining
- ▶ Nike Performance Poly

- ▶ thin racerback for optimal range of motion
- ▶ moderate coverage
- ▶ ergonomic enhanced fit
- ▶ internal lining



001



313



440



494



536



614

SIZES 20–40

NESS5021

WOMEN'S NIKE SWIM
PERFORMANCE FASTBACK
ONE PIECE

001 black
313 court green
440 midnight navy
494 game royal
536 court purple
614 university red

- ▶ 100% polyester
- 53% polyester / 47% PBT (chlorine resistant)
- ▶ 100% polyester lining
- ▶ Nike Performance Poly

- ▶ wide v-back for maximum support and optimal range of motion
- ▶ full back coverage
- ▶ flat seams for reduced chafing
- ▶ ergonomic enhanced fit
- ▶ internal lining



001



313



440



494



536



614

Notice: Information in this book has not been legally approved for marketing or merchandising usage.
Do not use any product images, product names, descriptions, or benefits for consumer facing applications.
Please contact the Nike Swim Marketing Department for approved content.

SIZES 20–40

TESS0036

MEN'S NIKE SWIM
PERFORMANCE JAMMER

001 black
313 court green
440 midnight navy
494 game royal
536 court purple
614 university red

- ▶ 100% polyester
- ▶ 100% polyester lining
- ▶ interior Nike drawcord for adjustability
- ▶ inseam gusset for fit and comfort
- ▶ flat seams for reduced chafing
- ▶ ergonomic enhanced fit
- ▶ internal lining



001



313

440

494



536

614

SIZES 20–38

NESS4030

MEN'S NIKE SWIM
PERFORMANCE BRIEF

001 black
313 court green
440 midnight navy
494 game royal
536 court purple
614 university red

- ▶ 100% polyester
- ▶ 100% polyester lining
- ▶ interior Nike drawcord for adjustability
- ▶ inseam gusset for fit and comfort
- ▶ flat seams for reduced chafing
- ▶ ergonomic enhanced fit



001



313

440

494



536

614

SIZES 22–38

Notice: Information in this book has not been legally approved for marketing or merchandising usage.
Do not use any product images, product names, descriptions, or benefits for consumer facing applications.
Please contact the Nike Swim Marketing Department for approved content.

TESS0053

MEN'S NIKE SWIM
PERFORMANCE SQUARE LEG

001 black
440 midnight navy

- ▶ 100% polyester
- 53% polyester / 47% PBT (chlorine resistant)
- ▶ 100% polyester lining
- ▶ Nike Performance Poly
- ▶ interior Nike drawcord for adjustability
- ▶ flat seams for reduced chafing
- ▶ ergonomic enhanced fit
- ▶ internal lining



001



440

SIZES 20–38

NESS4038

WOMEN'S NIKE SWIM
PERFORMANCE POWER
BACK ONE PIECE

001 black
494 game royal
614 university red

- ▶ 81% nylon / 19% spandex (chlorine resistant)
- ▶ 90% polyester / 10% lining
- ▶ Nike NX fabric
- ▶ wide racerback for maximum support and optimal range of motion
- ▶ full back coverage
- ▶ flat seams for reduced chafing
- ▶ ergonomic enhanced fit
- ▶ internal lining



001



494



614

Notice: Information in this book has not been legally approved for marketing or merchandising usage.
Do not use any product images, product names, descriptions, or benefits for consumer facing applications.
Please contact the Nike Swim Marketing Department for approved content.

SIZES 20–42

NESS4039

MEN'S NIKE SWIM
PERFORMANCE JAMMER

001 black
494 game royal
614 university red

- ▶ Nike NX fabric
81% nylon / 19% spandex
(chlorine resistant)
- ▶ 90% polyester / 10% spandex
lining
- ▶ interior drawcord for adjustability
- ▶ front gusset for fit and comfort
- ▶ flat seams for reduced chafing
- ▶ ergonomic enhanced fit
- ▶ internal lining



001



494



614

SIZES 20–38

TESS0049

WOMEN'S NIKE SWIM
PERFORMANCE RACERBACK
ONE PIECE

001 black
440 midnight navy
494 game royal

- ▶ Nike NX fabric
81% nylon / 19% spandex
(chlorine resistant)
- ▶ 90% polyester / 10% spandex
lining
- ▶ thin racerback straps for optimal
range of motion
- ▶ moderate back coverage
- ▶ ergonomic enhanced fit
- ▶ internal lining



001



440



494

Notice: Information in this book has not been legally approved for marketing or merchandising usage.
Do not use any product images, product names, descriptions, or benefits for consumer facing applications.
Please contact the Nike Swim Marketing Department for approved content.

SIZES 20–40

TESS0050

WOMEN'S NIKE SWIM
PERFORMANCE FASTBACK
ONE PIECE

001 black
440 midnight navy
494 game royal
614 university red

- ▶ Nike NX fabric
81% nylon / 19% spandex
(chlorine resistant)
- ▶ 90% polyester / 10% spandex
lining
- ▶ wide v-back for maximum support
and optimal range of motion
- ▶ full back coverage
- ▶ flat seams for reduced chafing
- ▶ ergonomic enhanced fit
- ▶ internal lining



001



440



494



614

SIZES 20-40

93173

WOMEN'S NIKE SWIM
PERFORMANCE SPORT TOP
2PC

001 black
440 midnight navy
494 game royal

- ▶ Nike NX fabric
81% nylon / 19% spandex
(chlorine resistant)
- ▶ 90% polyester / 10% spandex
lining
- ▶ racerback thin straps for optimal
range of motion
- ▶ interior drawcord for adjustability
- ▶ ergonomic enhanced fit
- ▶ internal lining



001



440



494

Notice: Information in this book has not been legally approved for marketing or merchandising usage.
Do not use any product images, product names, descriptions, or benefits for consumer facing applications.
Please contact the Nike Swim Marketing Department for approved content.

SIZES 2-16

TESS0051

MEN'S NIKE SWIM
PERFORMANCE JAMMER

001 black
440 midnight navy
494 game royal

- ▶ Nike NX fabric
81% nylon / 19% spandex
(chlorine resistant)
- ▶ 90% polyester / 10% spandex
lining
- ▶ interior Nike drawcord for
adjustability
- ▶ inseat gusset for fit and comfort
- ▶ flat seams for reduced chafing
- ▶ ergonomic enhanced fit
- ▶ internal lining



001



440



494

SIZES 20–38

TESS0052

MEN'S NIKE SWIM
PERFORMANCE BRIEF

001 black
440 midnight navy
494 game royal

- ▶ Nike NX fabric
81% nylon / 19% spandex
(chlorine resistant)
- ▶ 90% polyester / 10% spandex
lining
- ▶ interior Nike drawcord for
adjustability
- ▶ flat seams for reduced chafing
- ▶ ergonomic enhanced fit
- ▶ internal lining



001



440



494

Notice: Information in this book has not been legally approved for marketing or merchandising usage.
Do not use any product images, product names, descriptions, or benefits for consumer facing applications.
Please contact the Nike Swim Marketing Department for approved content.

SIZES 22–38

93210

WOMEN'S NIKE SWIM
PERFORMANCE WATER POLO
ONE PIECE

006 jet black
440 midnight navy
494 game royal
614 university red

- ▶ 100% polyester
- ▶ 100% polyester lining
- ▶ full back for maximum coverage and optimal range of motion
- ▶ high neck with back zipper for ease
- ▶ back mesh inset for water drainage
- ▶ flat seams for reduced chafing
- ▶ ergonomic enhanced fit
- ▶ internal colored lining



006



440



494



614

SIZES 24–42

TDSS0039

MEN'S NIKE SWIM
PERFORMANCE WATER POLO
BRIEF

001 black
440 midnight navy
494 game royal
614 university red

- ▶ 100% polyester
- ▶ 100% polyester lining
- ▶ interior Nike drawcord for adjustability
- ▶ flat seams for reduced chafing
- ▶ ergonomic enhanced fit
- ▶ internal lining



001



440



494



614

SIZES 24–40

Notice: Information in this book has not been legally approved for marketing or merchandising usage.
Do not use any product images, product names, descriptions, or benefits for consumer facing applications.
Please contact the Nike Swim Marketing Department for approved content.

NEW NESS8095

WOMEN'S NIKE SWIM
PERFORMANCE CROP TOP

100 white
430 lt blue fury
580 fuschia blast

- ▶ racerback for optimal range of motion
- ▶ nike graphic screenprint
- ▶ heat transfer swoosh



100



430



580

Notice: Information in this book has not been legally approved for marketing or merchandising usage.
Do not use any product images, product names, descriptions, or benefits for consumer facing applications.
Please contact the Nike Swim Marketing Department for approved content.

SIZES XS–XL

**SWIM
ON**

NEW NESS8059

WOMEN'S NIKE SWIM
PERFORMANCE POWER BACK
ONE PIECE

614 university red

737 volt

- ▶ 92% polyester / 8% spandex (chlorine resistant)
- ▶ 100% polyester lining
- ▶ poly blend
- ▶ screenprint swoosh
- ▶ thin racerback straps for optimal range of motion
- ▶ back mesh inset for water drainage
- ▶ screenprint guard graphic
- ▶ flat seams for reduced chafing
- ▶ ergonomic enhanced fit
- ▶ internal colored lining



614



737

SIZES 28–42

NEW NESS8060

WOMEN'S NIKE SWIM
PERFORMANCE POWER BACK
TOP

614 university red

737 volt

- ▶ 92% polyester / 8% spandex (chlorine resistant)
- ▶ 100% polyester lining
- ▶ poly blend
- ▶ screenprint swoosh
- ▶ thin racerback straps for optimal range of motion
- ▶ back mesh inset for water drainage
- ▶ screenprint guard graphic
- ▶ flat seams for reduced chafing
- ▶ ergonomic enhanced fit
- ▶ internal colored lining



614



737

Notice: Information in this book has not been legally approved for marketing or merchandising usage.
Do not use any product images, product names, descriptions, or benefits for consumer facing applications.
Please contact the Nike Swim Marketing Department for approved content.

SIZES XS–XL

NEW NESS8061

WOMEN'S NIKE SWIM
PERFORMANCE SPORT BIKINI
BOTTOM

614 university red

737 volt

- ▶ 92% polyester / 8% spandex (chlorine resistant)
- ▶ 100% polyester lining
- ▶ poly blend
- ▶ interior Nike drawcord for adjustability
- ▶ 2" outseam
- ▶ flat seams for reduced chafing
- ▶ ergonomic enhanced fit
- ▶ internal colored lining



614



737

SIZES XS-XL

NEW NESS8064

WOMEN'S NIKE SWIM
PERFORMANCE SHORT
SLEEVE HYDROGUARD

614 university red

737 volt

- ▶ 91% polyester / 9% spandex
- ▶ Dri-FIT
- ▶ fitted
- ▶ UV protection (UPF) 40+
- ▶ shaped funnel neck provides comfort and coverage
- ▶ ergonomic construction for motion-ready fit
- ▶ internal Nike swim necktape provides additional comfort
- ▶ centerfront screenprint guard graphic



614



737

Notice: Information in this book has not been legally approved for marketing or merchandising usage.
Do not use any product images, product names, descriptions, or benefits for consumer facing applications.
Please contact the Nike Swim Marketing Department for approved content.

SIZES XS-XL

NEW NESS8062

MEN'S NIKE SWIM
PERFORMANCE DIVERGE
9" VOLLEY

614 university red

737 volt

- ▶ 100% polyester brushed microfiber woven (sheds water)
- ▶ 100% polyester mesh lining
- ▶ screenprint swoosh
- ▶ stretch waist with lace up closure for comfort and adjustability
- ▶ 9" inseam / 20" outseam
- ▶ built-in mesh brief for comfort, breathability and support
- ▶ side pockets with mesh pocket bags for water drainage
- ▶ leg vent for maximum range of movement
- ▶ internal mesh pocket for small item storage
- ▶ screenprint guard graphic



614



737

SIZES S-XXL

NEW NESS8063

MEN'S NIKE SWIM
PERFORMANCE SHORT
SLEEVE HYDROGUARD

614 university red

737 volt

- ▶ 100% polyester interlock
- ▶ Dri-FIT
- ▶ heat transfer swoosh
- ▶ regular fit
- ▶ UV protection (UPF) 40+
- ▶ flat seams for reduced chafing and ergonomic construction for motion-ready fit
- ▶ internal Nike swim necktape provides additional comfort
- ▶ centerfront screenprint guard graphic



614



737

Notice: Information in this book has not been legally approved for marketing or merchandising usage.
Do not use any product images, product names, descriptions, or benefits for consumer facing applications.
Please contact the Nike Swim Marketing Department for approved content.

SIZES S-XXL

NEW NESS8432

MEN'S NIKE SWIM
VITAL 7" VOLLEY SHORT

- 001 black
- 071 gunsmoke
- 317 clear emerald
- 403 blue force
- 416 hyper royal
- 489 obsidian
- 614 university red
- 618 hyper crimson

- ▶ 100% polyester mechanical stretch twill (sheds water)
- ▶ 100% polyester mesh lining
- ▶ stretch waist and exterior drawcord for comfort and adjustability
- ▶ 7" inseam / 18" outseam
- ▶ built-in mesh brief for comfort, breathability and support
- ▶ back velcro pocket with laser perforation detail for water drainage
- ▶ leg vent for maximum range of movement
- ▶ internal mesh pocket for small item storage



001



071

317

403



416

489

614



618

SIZES S-XXL

NEW NESS8433

MEN'S NIKE SWIM SPLIT 9"
VOLLEY SHORT

- 001 black
- 071 gunsmoke
- 317 clear emerald
- 403 blue force
- 489 obsidian
- 618 hyper crimson

- ▶ 92% polyester / 8% spandex heathered woven (sheds water)
- ▶ 95% polyester / 5% spandex stretch woven (sheds water)
- ▶ 100% polyester mesh lining
- ▶ stretch waist and exterior drawcord for comfort and adjustability
- ▶ 9" inseam / 20" outseam
- ▶ built-in mesh brief for comfort, breathability and support
- ▶ side pockets with mesh pocket bags for water drainage
- ▶ additional zippered pocket on lower left leg
- ▶ internal mesh pocket for small item storage



001



071

317

403



489



618

Notice: Information in this book has not been legally approved for marketing or merchandising usage.
Do not use any product images, product names, descriptions, or benefits for consumer facing applications.
Please contact the Nike Swim Marketing Department for approved content.

SIZES S-XXL

NEW NESS8450

MEN'S NIKE SWIM
BREAKER 9" VOLLEY SHORT

001 black
071 gunsmoke
317 clear emerald
430 lt blue fury
614 university red

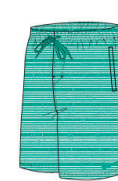
- ▶ 100% polyester brushed microfiber woven (sheds water)
- ▶ 100% polyester mesh lining
- ▶ stretch waist and exterior drawcord for comfort and adjustability
- ▶ 9" inseam / 20" outseam
- ▶ built-in mesh brief for comfort, breathability and support
- ▶ side welt pockets with mesh pocket bags for water drainage
- ▶ internal mesh pocket for small item storage



001



071



317



430



614

SIZES S-XXL

NEW NESS8454

MEN'S NIKE SWIM BREAKER 9"
VOLLEY SHORT

001 black
317 clear emerald
403 blue force
416 hyper royal
614 university red

- ▶ 100% polyester brushed microfiber woven (sheds water)
- ▶ 100% polyester mesh lining
- ▶ stretch waist and exterior drawcord for comfort and adjustability
- ▶ 9" inseam / 20" outseam
- ▶ built-in mesh brief for comfort, breathability and support
- ▶ side welt pockets with mesh pocket bags for water drainage
- ▶ internal mesh pocket for small item storage



001



317



403



416



614

SIZES S-XXL

Notice: Information in this book has not been legally approved for marketing or merchandising usage.
Do not use any product images, product names, descriptions, or benefits for consumer facing applications.
Please contact the Nike Swim Marketing Department for approved content.

NEW NESS8534

MEN'S NIKE SWIM
SHORT SLEEVE HYDROGUARD

- 001 black
- 071 gunsmoke
- 370 clear emerald
- 416 hyper royal
- 430 lt blue fury
- 489 obsidian
- 614 university red
- 618 hyper crimson

- ▶ 100% polyester heathered jersey
- ▶ Dri-FIT

- ▶ regular fit
- ▶ UV protection (UPF 40+)
- ▶ flat seams for reduced chafing and ergonomic construction for motion-ready fit
- ▶ internal Nike swim necktape provides additional comfort



001



071



370



416



430



489



614



618

SIZES S-XXL

NEW NESS8535

MEN'S NIKE SWIM
PERFORMANCE LONG
SLEEVE HYDROGUARD

- 001 black
- 071 gunsmoke
- 370 clear emerald
- 416 hyper royal
- 430 lt blue fury
- 489 obsidian
- 614 university red
- 618 hyper crimson

- ▶ 100% polyester heathered jersey
- ▶ Dri-FIT

- ▶ regular fit
- ▶ UV protection (UPF) 40+
- ▶ flat seams for reduced chafing and ergonomic construction for motion-ready fit
- ▶ internal Nike swim necktape provides additional comfort



001



071



370



416



430



489



614



618

SIZES S-XXL

Notice: Information in this book has not been legally approved for marketing or merchandising usage.
Do not use any product images, product names, descriptions, or benefits for consumer facing applications.
Please contact the Nike Swim Marketing Department for approved content.

NEW

658085

MEN'S GAME DAY POLO

012 black
 106 white
 420 navy
 494 royal



012

- 100% polyester
- Dri-FIT double-knit flat back mesh body fabric with self collar
- contrast mesh insets at shoulder, collar, and side seam
- 3 button front placket
- swoosh design trademark at upper right chest
- body width: 23.5" / body length 31" (size LG)



SIZES S–XXL

NEW

835571MEN'S NIKE SWIM
TRAINING JACKET

020 black
 418 navy
 466 royal
 656 scarlet



020

- 100% polyester
- dri-FIT technology helps you stay dry and comfortable
- textured knit fabric is breathable and lightweight
- full-length zipper and mock neck for custom coverage
- zippered pockets provide secure storage
- minimized cuffs and hem offer zero distractions



SIZES S–XXL

Notice: Information in this book has not been legally approved for marketing or merchandising usage.
 Do not use any product images, product names, descriptions, or benefits for consumer facing applications.
 Please contact the Nike Swim Marketing Department for approved content.

NEW
835573

**MEN'S NIKE SWIM
TRAINING PANT**

020 black
418 navy
466 royal
656 scarlet



020

- ▶ **100% polyester**
- ▶ dri-FIT technology helps you stay dry and comfortable
- ▶ double-knit mesh on side stripes enhance breathability
- ▶ elastic waistband with drawcord creates a snug fit
- ▶ strategically-placed seams for zero distractions
- ▶ side pockets provide convenient storage.



SIZES S–XXL

NEW
658063

WOMEN'S GAME DAY POLO

012 black
106 white
420 navy
494 royal



012

- ▶ Dri-FIT double-knit flat back mesh body fabric with self collar
- ▶ contrast mesh insets at shoulder, collar, and side seam
- ▶ 3 button front placket
- ▶ swoosh design trademark at upper right chest
- ▶ body width: 19" / body length 26.26" (size M)



SIZES S–XXL

Notice: Information in this book has not been legally approved for marketing or merchandising usage.
Do not use any product images, product names, descriptions, or benefits for consumer facing applications.
Please contact the Nike Swim Marketing Department for approved content.

NEW

836119WOMEN'S NIKE SWIM
TRAINING JACKET

020 black
 418 navy
 466 royal
 656 scarlet



020

- ▶ 100% polyester
- ▶ double-knit polyester fabric helps keep you warm
- ▶ full-zip mock neck to block out the elements
- ▶ double-knit mesh panel on the shoulder for ventilation
- ▶ ergonomic seams allow for a wide range of motion
- ▶ zippered pockets provide secure storage



SIZES XS–XL

NEW

836120WOMEN'S NIKE SWIM
TRAINING PANT

020 black
 418 navy
 466 royal
 656 scarlet



020

- ▶ 100% polyester
- ▶ 100% double-knit polyester fabric helps keep you warm
- ▶ elastic waistband with drawcord offers an adjustable fit
- ▶ side pockets offer small item storage
- ▶ skinny fit is slimming through the hem

Notice: Information in this book has not been legally approved for marketing or merchandising usage.
 Do not use any product images, product names, descriptions, or benefits for consumer facing applications.
 Please contact the Nike Swim Marketing Department for approved content.



SIZES XS–XL

NEW

836306YOUTH NIKE SWIM
TRAINING JACKET

020 black
 418 navy
 494 royal
 656 scarlet



020

- ▶ 92% polyester / 8% spandex (chlorine resistant)
- ▶ 100% polyester lining
- ▶ poly blend
- ▶ thin racerback straps for optimal range of motion
- ▶ back mesh inset for water drainage
- ▶ screenprint guard graphic
- ▶ flat seams for reduced chafing
- ▶ ergonomic enhanced fit
- ▶ internal colored lining



SIZES S–XL

NEW

836307YOUTH NIKE SWIM
TRAINING PANT

020 black
 418 navy
 494 royal
 656 scarlet



020

- ▶ 100% polyester
- ▶ dri-FIT technology helps keep you dry and comfortable
- ▶ minimal cuff and hem trim for zero distractions
- ▶ elastic waistband with drawcord for a snug fit
- ▶ side pockets offer convenient storage

Notice: Information in this book has not been legally approved for marketing or merchandising usage.
 Do not use any product images, product names, descriptions, or benefits for consumer facing applications.
 Please contact the Nike Swim Marketing Department for approved content.



SIZES S–XL

343880

BENASSI "JUST DO IT"
SLIDE

001 black/white



001

- upper is thermoplastic rubber
- midsole and outsole is Nike solarsoft foam

for women's sizing - please order one size
down from the men's size (i.e. women's
size 6 is a men's size 5)

Notice: Information in this book has not been legally approved for marketing or merchandising usage.
Do not use any product images, product names, descriptions, or benefits for consumer facing applications.
Please contact the Nike Swim Marketing Department for approved content.

SIZES 5–13

SWIM GEAR

CAPS / GOGGLES / ACCESSORIES

NIKE CARES

All Nike goggles are PVC free.

We are proud to produce goggles free from PVC or added chemical softeners containing phthalates, including all adhesives and logo applications. Instead, our goggles are made using inherently soft materials which do not require these chemical compounds. Eliminating PVC in our products has been a Nike initiative since the late 1990s.



NESS7160

NIKE SWIM DECK BAG

001 black
054 wolf grey

- ▶ durable fabric stands up to daily use
- ▶ fast draining mesh bottom
- ▶ roomy main compartment offers plenty of equipment storage
- ▶ secure zip and mesh exterior pockets
- ▶ convenient single shoulder strap
- ▶ 17" X 22"



001



054



SIZES OS

NESS7159

NIKE SWIM BACKPACK

001 black
483 blue graphite
673 racer pink

- ▶ water-resistant bottom helps protect your belongings
- ▶ pull-out mesh pocket stores your wet gear
- ▶ roomy main compartment with interior laptop storage
- ▶ easy-access exterior goggle and water bottle pockets
- ▶ wide, adjustable shoulder straps and chest harness
- ▶ 17" X 22"



001



483



673



Notice: Information in this book has not been legally approved for marketing or merchandising usage. Do not use any product images, product names, descriptions, or benefits for consumer facing applications. Please contact the Nike Swim Marketing Department for approved content.

SIZES OS

93050

NIKE SWIM PERFORMANCE SOLID LATEX CAP

- 001** black
- 04A** silver metallic
- 100** white
- 440** midnight navy
- 490** varsity royal
- 640** varsity red
- 676** digital pink
- 737** volt

- ▶ durable, lightweight latex resists tearing
- ▶ secure, grooved interior rim enhances grip
- ▶ durable material stands up to regular use in chlorine



001



04A



100



440



490



640



676



737

SIZES OS

93060

NIKE SWIM PERFORMANCE SOLID SILICONE CAP

- 001** black
- 040** silver metallic
- 100** white
- 440** midnight navy
- 66A** pink

- ▶ hypoallergenic, high stretch silicone material
- ▶ textured interior increases grip for a secure fit
- ▶ durable material stands up to regular use in chlorine



001



04A



100



440



66A

Notice: Information in this book has not been legally approved for marketing or merchandising usage. Do not use any product images, product names, descriptions, or benefits for consumer facing applications. Please contact the Nike Swim Marketing Department for approved content.

SIZES OS

TESS0106

NIKE SWIM PERFORMANCE SILICONE YOUTH CAP

- 332** mint candy
420 lt current blue
523 mega blue
757 lemon twist
956 spark

- ▶ hypoallergenic, high-stretch silicone material
- ▶ textured interior increases grip for a secure fit
- ▶ durable material stands up to regular use in chlorine
- ▶ convenient button adjustment on split head strap
- ▶ durable, soft silicone one-piece frame



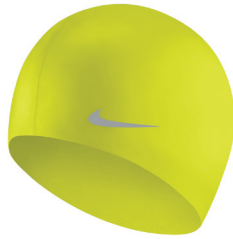
332



420



523



757



956

SIZES OS

93065

NIKE SWIM TRAINING SYNTHETIC CAP

- 001** black
440 midnight navy
494 game royal

- ▶ 81% nylon / 19% spandex
- ▶ stretchy, chlorine-resistant spandex material
- ▶ tight-fitting, three-panel skull cap design offers universal fit
- ▶ soft interior for optimal comfort
- ▶ durable material stands up to regular use in chlorine



001



440



494

Notice: Information in this book has not been legally approved for marketing or merchandising usage.
 Do not use any product images, product names, descriptions, or benefits for consumer facing applications.
 Please contact the Nike Swim Marketing Department for approved content.

SIZES OS

NESS8161

NIKE SWIM TRAINING SYNTHETIC
COATED PRINT CAP

001 black
737 volt

- **82% nylon / 18% spandex**
- exterior coating provides long-lasting durability
- tight-fitting, three-panel skull cap design offers universal fit
- soft interior for optimal comfort



001



737

SIZES OS

NESS6158

NIKE SWIM CARBON FIBER
CAP

360 black / venom green

- **81% nylon / 19% spandex**
- stretchy, chlorine-resistant spandex material
- tight-fitting, three-panel skull cap design offers universal fit
- soft interior for optimal comfort
- durable material stands up to regular use in chlorine



360

SIZES OS

Notice: Information in this book has not been legally approved for marketing or merchandising usage.
Do not use any product images, product names, descriptions, or benefits for consumer facing applications.
Please contact the Nike Swim Marketing Department for approved content.

NESS6166

NIKE SWIM GEAR CAP

04A silver metallic

- ▶ hypoallergenic, high-stretch silicone material
- ▶ textured interior increases grip for a secure fit
- ▶ contoured shape provides full head coverage
- ▶ durable material stands up to regular use in chlorine



04A

SIZES OS

NESS6168

NIKE SWIM GEAR SLOGAN CAP

001 black
440 midnight navy
458 photo blue

- ▶ hypoallergenic, high-stretch silicone material
- ▶ textured interior increases grip for a secure fit
- ▶ contoured shape provides full head coverage
- ▶ durable material stands up to regular use in chlorine



left



001



left



440



left



458

Notice: Information in this book has not been legally approved for marketing or merchandising usage. Do not use any product images, product names, descriptions, or benefits for consumer facing applications. Please contact the Nike Swim Marketing Department for approved content.

SIZES OS

NEW
NESS8150
 NIKE SWIM TRAINING
 ONE-PIECE FRAME GOGGLE

001 black
077 atmosphere grey

- ▶ UV-blocking mirrored lens for protection and clear vision
- ▶ durable, soft and flexible one-piece frame
- ▶ deep lens for an unobstructed peripheral view
- ▶ convenient button adjustment on split head strap



001



077

SIZES OS

NEW
NESS8152
 NIKE SWIM TRAINING
 RUPTURE GOGGLE

001 black
077 atmosphere grey
639 hot punch

- ▶ low-profile, streamlined, anti-fog lens
- ▶ extended, flexible gasket enhances comfort and coverage
- ▶ flexible scored nose bridge offers a personalized fit
- ▶ convenient button adjustment on split head strap
- ▶ durable, soft silicone one-piece frame



001



077



639

Notice: Information in this book has not been legally approved for marketing or merchandising usage. Do not use any product images, product names, descriptions, or benefits for consumer facing applications. Please contact the Nike Swim Marketing Department for approved content.

SIZES OS

NESS7163

NIKE SWIM TRAINING
RUPTURE YOUTH GOGGLE

387 ghost green
440 midnight navy



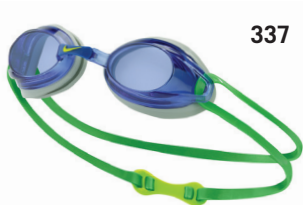
- ▶ low-profile, streamlined, anti-fog lens
- ▶ superior gasket for a water-tight seal
- ▶ three nose bridge sizes included for a personalized fit
- ▶ unobstructed peripheral view
- ▶ secure double head strap

SIZES OS

93010

NIKE SWIM PERFORMANCE
REMORA GOGGLE

001 black
007 smoke
042 neutral grey
070 smoke / cyber
337 springleaf
400 blue
437 copa
492 hyper blue
758 cyber
821 bright mango



- ▶ low-profile, streamlined, anti-fog lens
- ▶ superior gasket for a water-tight seal
- ▶ three nose bridge sizes included for a personalized fit
- ▶ secure double head strap



Notice: Information in this book has not been legally approved for marketing or merchandising usage. Do not use any product images, product names, descriptions, or benefits for consumer facing applications. Please contact the Nike Swim Marketing Department for approved content.

SIZES OS

93011

NIKE SWIM PERFORMANCE REMORA GOGGLE

- 001** black
044 silver metallic
385 energy
440 midnight navy
467 metallic blue
627 challenge red

- ▶ low-profile, streamlined, anti-fog lens
- ▶ superior gasket for a water-tight seal
- ▶ UV- blocking mirrored lens for protection and clear vision
- ▶ three nose bridge sizes included for a personalized fit
- ▶ secure double head strap



001



044



385



440



467



627



SIZES OS

TFSS0552

NIKE SWIM PERFORMANCE REMORA SOFT SEAL GOGGLE

- 000** clear
421 neon turq

- ▶ low-profile, streamlined, anti-fog lens
- ▶ soft-seal, hypoallergenic gasket is gentle on your skin
- ▶ three nose bridge sizes included for a personalized fit
- ▶ secure double head strap



000



421



SIZES OS

Notice: Information in this book has not been legally approved for marketing or merchandising usage.
 Do not use any product images, product names, descriptions, or benefits for consumer facing applications.
 Please contact the Nike Swim Marketing Department for approved content.

NESS4591

NIKE SWIM PERFORMANCE
REMORA YOUTH GOGGLE

007 smoke
492 hyper blue

- ▶ low-profile, streamlined, anti-fog lens
- ▶ superior gasket for a water-tight seal
- ▶ three nose bridge sizes included for a personalized fit
- ▶ unobstructed view
- ▶ secure double head strap



007



492



SIZES OS

NESS6156

NIKE SWIM PERFORMANCE
REMORA MIRROR YOUTH GOGGLE

501 purple dynasty
614 university red
737 volt

- ▶ low-profile, streamlined, anti-fog lens
- ▶ superior gasket for a water-tight seal
- ▶ UV-blocking mirrored lens for protection and clear vision
- ▶ three nose bridge sizes included for a personalized fit
- ▶ secure double head strap



501



614



737

Notice: Information in this book has not been legally approved for marketing or merchandising usage. Do not use any product images, product names, descriptions, or benefits for consumer facing applications. Please contact the Nike Swim Marketing Department for approved content.

SIZES OS

NESS7157

NIKE SWIM SPORT CATLA
YOUTH GOGGLE

001 black
676 digital pink

- ▶ wide-angle lens for an unobstructed peripheral view
- ▶ durable, soft and flexible one-piece frame
- ▶ secure, silicone split head strap



001



676

SIZES OS

N79151

NIKE SWIM TRAINING
CHROME GOGGLE

000 clear
007 smoke
354 electric green
400 blue
440 midnight navy
445 chlorine blue
655 vivid pink

- ▶ UV-blocking, anti-fog lens provides clear vision
- ▶ soft flexible gasket for extended-wear comfort
- ▶ six-way adjustable nose bridge for a secure fit
- ▶ secure, silicone split head strap



000



007



354



400



440



445



655

Notice: Information in this book has not been legally approved for marketing or merchandising usage. Do not use any product images, product names, descriptions, or benefits for consumer facing applications. Please contact the Nike Swim Marketing Department for approved content.

SIZES OS

NESS7152

NIKE SWIM TRAINING
CHROME MIRROR GOGGLE

001 black
381 poison green
492 hyper blue

- ▶ UV-blocking mirrored lens for protection and clear vision
- ▶ soft, flexible gasket with finger notches for easy gripping
- ▶ six-way adjustable nose bridge for a secure fit
- ▶ secure, silicone split head strap



001



381



492

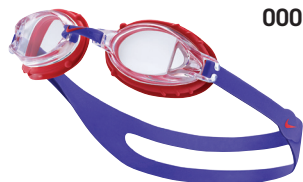
SIZES OS

TFSS0563

NIKE SWIM TRAINING
CHROME YOUTH GOGGLE

000 clear
001 black
007 electric green
075 strata gray
453 ice blue
562 turquoise blue

- ▶ UV-blocking, anti-fog lens provides clear vision
- ▶ soft, flexible gasket with finger notches for easy gripping
- ▶ six-way adjustable nose bridge for a secure fit
- ▶ secure, silicone split head strap



000



001



007



075



453



562

Notice: Information in this book has not been legally approved for marketing or merchandising usage. Do not use any product images, product names, descriptions, or benefits for consumer facing applications. Please contact the Nike Swim Marketing Department for approved content.

SIZES OS

NESS6157

NIKE SWIM TRAINING
CHROME MIRROR
YOUTH GOGGLE

007 smoke
458 photo blue
614 university red
673 racer pink

- ▶ UV-blocking mirrored lens for protection and clear vision
- ▶ soft, flexible gasket with finger notches for easy gripping
- ▶ six-way adjustable nose bridge for a secure fit
- ▶ secure, silicone split head strap



007



458



614



673

SIZES OS

TFSS0555

NIKE SWIM SPORT PROTO
SOFT SEAL GOGGLE

000 clear
007 smoke
400 blue
574 true berry

- ▶ UV-blocking, anti-fog lens provides clear vision
- ▶ soft-seal, hypoallergenic gasket is gentle on your skin
- ▶ six-way adjustable nose bridge for a secure fit
- ▶ stretchy silicone single head strap for easy on and off



000



007



400



574

Notice: Information in this book has not been legally approved for marketing or merchandising usage. Do not use any product images, product names, descriptions, or benefits for consumer facing applications. Please contact the Nike Swim Marketing Department for approved content.

SIZES OS

TFSS0700

NIKE SWIM SPORT
CHALLENGER YOUTH GOGGLE

007 smoke
400 blue
440 midnight navy
822 total orange

- ▶ deep lens for comfort and wider scope of vision
- ▶ UV-blocking, anti-fog lens provides clear vision
- ▶ six-way adjustable nose bridge for a secure fit
- ▶ secure, silicone split head strap



007



400



440



822

Notice: Information in this book has not been legally approved for marketing or merchandising usage.
 Do not use any product images, product names, descriptions, or benefits for consumer facing applications.
 Please contact the Nike Swim Marketing Department for approved content.

SIZES OS

NESS7153

NIKE SWIM HYDRO TOWEL

356 electro green
425 hyper cobalt
673 racer pink

- ▶ highly absorbent fabric
- ▶ soft, lightweight material
- ▶ convenient size for travel
- ▶ 12"X16"



356



425



673

SIZES OS

NESS8165

NIKE SWIM LARGE
HYDRO TOWEL

054 wolf grey
356 electro green
425 hyper cobalt
673 racer pink

- ▶ highly absorbent fabric
- ▶ soft, lightweight material
- ▶ convenient size for travel
- ▶ 17"X26"



054



356



425



673

Notice: Information in this book has not been legally approved for marketing or merchandising usage.
 Do not use any product images, product names, descriptions, or benefits for consumer facing applications.
 Please contact the Nike Swim Marketing Department for approved content.

SIZES OS

NIKE SWIM FIT GUIDE

PERFORMANCE MALE

US SIZE	20	22	24	26	28	30	32	34	36	38	40
UK	5-6 YRS	6-7 YRS	8-10 YRS	10-12 YRS	12-14 YRS	30/75cm	32/80cm	34/85cm	36/90cm	38/95cm	40/100cm
D	109-116cm	116-127cm	130-142cm	142-153cm	153-167cm	46	48	50	52	54	56
FR	5-6 ANS	6-7 ANS	8-10 ANS	10-12 ANS	12-14 ANS	75cm	80cm	85cm	90cm	95cm	100cm
IT	5-6 ANNI	6-7 ANNI	8-10 ANNI	10-12 ANNI	12-14 ANNI	44	46	48	50	52	54
(MEN ALPHA EQUIV)				(S)	(S)	(M)	(M)	(L)	(XL)	(XL)	(XXL)
(BOYS ALPHA EQUIV)		(S)	(M)	(L)	(XL)						

INCHES

WAIST	21 - 23	23 - 25	25 - 27	27 - 29	29 - 31	31 - 33	33 - 35	35 - 37	37 - 39	39 - 41	41 - 43
HIP	25 - 27	27 - 29	32 - 34	34 - 36	36 - 38	38 - 40	40 - 42	42 - 44	44 - 46	46 - 48	48 - 50

CENTIMETERS

WAIST	53.5 - 58.5	58.5 - 63.5	63.5 - 68.5	68.5 - 73.5	73.5 - 78.5	78.5 - 84	84 - 89	89 - 94	94 - 99	99 - 104	104 - 109
HIP	63.5 - 68.5	68.5 - 73.5	81.5 - 86.5	86.5 - 91.5	91.5 - 96.5	96.5 - 101.5	101.5 - 106.5	106.5 - 112	112 - 117	117 - 122	122 - 127

PERFORMANCE FEMALE

US SIZE	20	22	24	26	28	30	32	34	36	38	40	42
US DUAL SIZE	GRL 5	GRL 6	GRL 8	GRL 10	GRL 12	WMS 4	WMS 6	WMS 8	WMS 10	WMS 12	WMS 14	WMS 16
UK	5-6 YRS	6-7 YRS	8-10 YRS	10-12 YRS	12-14 YRS	8	10	12	14	16	18	20
D	109-116cm	116-127cm	132-142cm	142-153cm	153-163cm	34	36	38	40	42	44	46
FR	5-6 ANS	6-7 ANS	8-10 ANS	10-12 ANS	12-14 ANS	36	38	40	42	44	46	48
IT	5-6 ANNI	6-7 ANNI	8-10 ANNI	10-12 ANNI	12-14 ANNI	40	42	44	46	48	50	52

INCHES

BUST	22 ^{1/2} - 23 ^{1/2}	23 ^{1/2} - 25	28 ^{1/2} - 30 ^{1/2}	30 ^{1/2} - 32 ^{1/2}	32 ^{1/2} - 34 ^{1/2}	34 ^{1/2} - 36 ^{1/2}	36 ^{1/2} - 38 ^{1/2}	38 ^{1/2} - 40 ^{1/2}	40 ^{1/2} - 42 ^{1/2}	42 ^{1/2} - 44 ^{1/2}	44 ^{1/2} - 46 ^{1/2}	46 ^{1/2} - 48 ^{1/2}
WAIST	21 ^{3/4} - 22 ^{1/4}	22 ^{1/4} - 22 ^{3/4}	22 ^{3/4} - 24	24 - 25 ^{1/2}	25 ^{1/2} - 27	27 - 28 ^{1/2}	28 ^{1/2} - 30	30 - 31 ^{1/2}	31 ^{1/2} - 33	33 - 34 ^{1/2}	34 ^{1/2} - 36	36 - 37 ^{1/2}
HIP	23 ^{1/2} - 24 ^{1/2}	24 ^{1/2} - 26	31 ^{1/2} - 33 ^{1/4}	33 ^{1/4} - 35	35 - 36 ^{3/4}	36 ^{3/4} - 38 ^{1/2}	38 ^{1/2} - 40	40 - 41 ^{1/2}	41 ^{1/2} - 43	43 - 44 ^{1/2}	44 ^{1/2} - 46	46 - 47 ^{1/2}
TORSO	39 ^{1/2} - 41 ^{1/2}	41 ^{1/2} - 43 ^{1/2}	55 ^{1/4} - 57	57 - 58 ^{3/4}	58 ^{3/4} - 60 ^{1/2}	60 ^{1/2} - 62 ^{1/4}	62 ^{1/4} - 64	64 - 65 ^{3/4}	65 ^{3/4} - 67 ^{1/2}	67 ^{1/2} - 69 ^{1/4}	69 ^{1/4} - 71	71 - 72 ^{3/4}

CENTIMETERS

BUST	57 - 59.5	59.5 - 63.5	72.5 - 77.5	77.5 - 82.5	82.5 - 87.5	87.5 - 92.5	92.5 - 98	98 - 103	103 - 108	108 - 113	113 - 118	118 - 123
WAIST	55 - 56.5	56.5 - 58	58 - 61	61 - 65	65 - 68.5	68.5 - 72.5	72.5 - 76	76 - 80	80 - 84	84 - 87.5	87.5 - 91.5	91.5 - 95.5
HIP	59.5 - 62	62 - 66	80 - 84.5	84.5 - 89	89 - 93.5	93.5 - 98	98 - 101.5	101.5 - 105.5	105.5 - 109	109 - 113	113 - 117	117 - 120.5
TORSO	100.5 - 105.5	105.5 - 110.5	140.5 - 145	145 - 149	149 - 153.5	153.5 - 158	158 - 162.5	162.5 - 167	167 - 171.5	171.5 - 176	176 - 180.5	180.5 - 185

PERFORMANCE SEPARATES WOMEN

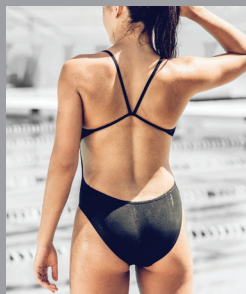
US SIZE	XS		S		M		L		XL	
PERFORMANCE	26 - 28		28 - 30		30 - 32		32 - 34		36	
US NUMERIC	0	2	4	6	8	10	12	14	16	
UK NUMERIC	4	6	8	10	12	14	16	18	20	

INCHES

BUST	31 ^{1/2} - 32 ^{1/2}	32 ^{1/2} - 33 ^{1/2}	33 ^{1/2} - 34 ^{1/2}	34 ^{1/2} - 35 ^{1/2}	35 ^{1/2} - 36 ^{1/2}	36 ^{1/2} - 37 ^{1/2}	37 ^{1/2} - 39	39 - 40 ^{1/2}	40 ^{1/2} - 42 ^{1/2}	
WAIST	24 - 25	25 - 26	26 - 27	27 - 28	28 - 29	29 - 30	30 - 31 ^{1/2}	31 ^{1/2} - 33	33 - 35	
HIP	34 ^{1/2} - 35 ^{1/2}	35 ^{1/2} - 36 ^{1/2}	36 ^{1/2} - 37 ^{1/2}	37 ^{1/2} - 38 ^{1/2}	38 ^{1/2} - 39 ^{1/2}	39 ^{1/2} - 40 ^{1/2}	40 ^{1/2} - 42	42 - 43 ^{1/2}	43 ^{1/2} - 45	
TORSO	55 ^{3/4} - 57	57 - 58 ^{1/4}	58 ^{1/4} - 59 ^{1/2}	59 ^{1/2} - 60 ^{3/4}	60 ^{3/4} - 62	62 - 63 ^{1/4}	63 ^{1/4} - 64 ^{1/2}	64 ^{1/2} - 65 ^{3/4}	65 ^{3/4} - 67	

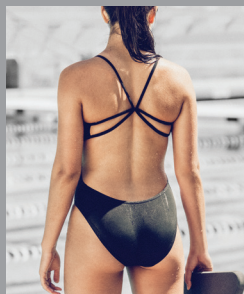
CENTIMETERS

BUST	80 - 82.5	82.5 - 85	85 - 87.5	87.5 - 90	90 - 92.5	92.5 - 95.5	95.5 - 99	99 - 103	103 - 108	
WAIST	61 - 63.5	63.5 - 66	66 - 68.5	68.5 - 71	71 - 73.5	73.5 - 76	76 - 80	80 - 84	84 - 89	
HIP	87.5 - 90	90 - 92.5	92.5 - 95.5	95.5 - 98	98 - 100	100 - 103	103 - 106.5	106.5 - 110.5	110.5 - 114.5	
TORSO	141.5 - 145	145 - 148	148 - 151	151 - 154.5	154.5 - 157.5	157.5 - 160.5	160.5 - 164	164 - 167	167 - 170	



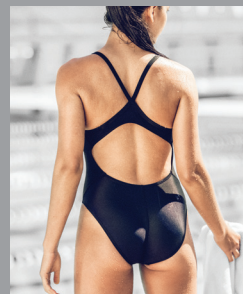
CUT-OUT TANK

- ultra open back
- micro straps for enhanced range of motion
- low neckline
- minimal coverage
- ideal for outdoor practice and race day



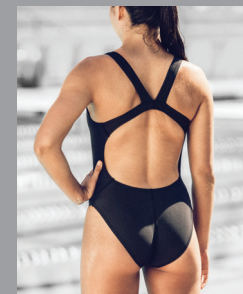
MODERN CUT-OUT TANK

- ultra open back
- double micro straps for enhanced range of motion and support
- low neckline
- minimal coverage
- ideal for outdoor practice and race day



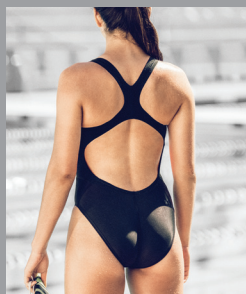
LINGERIE TANK

- moderate open back
- medium neckline
- great fit, functionality, comfort and support
- ideal for practice and race day



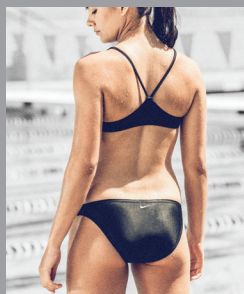
FASTBACK TANK

- conservative back
- wide straps
- high neckline
- more streamlined shape for less drag
- designed to accelerate your training



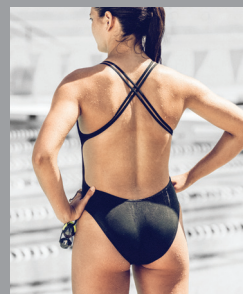
POWER BACK TANK

- conservative back
- wide straps for maximum support
- high neckline
- more streamlined shape for less drag
- ultimate support



SPORT TOP 2PC

- sport top with v-shaped lingerie straps
- classic fit
- ideal for training



SPIDER BACK TANK

- ultra open back
- micro crisscross straps for enhanced range of motion
- low neckline
- minimal coverage
- ideal for outdoor practice and race day



HIGH NECK TANK

- ultra conservative back
- wide straps for great coverage
- high neckline
- back zipper for easy on-and-off
- mesh inserts for drainage and breathability



PERRY ELLIS INTERNATIONAL

NIKESWIM.COM

AUTHORIZED LICENSEE OF NIKE SWIMWEAR 1.800.626.0215
FAX 1.800.821.6943 | PRINTED IN USA 2017 © NIKE, INC.
ALL RIGHTS RESERVED.